

191

HITS OF TODAY Stage Band Series

STRANGERS IN THE NIGHT

(A Theme from the Universal Picture "A Man Could Get Killed")

Arranged by Bob Florence

Suggested Staging

SAXES up at letter A thru 6th measure of letter A
BRASS and SAXES up at letter D to end

Words by CHARLES SINGLETON and EDDIE SNYDER

Music by BERT KAEMPFFERT

CONDUCTOR

SLOW EASY SWING - M.M. ♩ = 72

ENSEMBLE

CONDUCTOR - PAGE 2
(ENSEMBLE)

A musical staff in G major with a treble clef. It contains several measures of music, including eighth and sixteenth notes, and rests. There are some handwritten annotations above the staff.

B

A musical staff in G major with a treble clef. It contains several measures of music, including eighth and sixteenth notes, and rests. There are some handwritten annotations above the staff.

A musical staff in G major with a treble clef. It contains several measures of music, including eighth and sixteenth notes, and rests. There are some handwritten annotations above the staff.

C PIANO SOLO

A musical staff in G major with a treble clef. It contains several measures of music, including eighth and sixteenth notes, and rests. There are some handwritten annotations above the staff.

D ENSEMBLE

A musical staff in G major with a treble clef. It contains several measures of music, including eighth and sixteenth notes, and rests. There are some handwritten annotations above the staff.

SAX SOLO

ENSEMBLE

A musical staff in G major with a treble clef. It contains several measures of music, including eighth and sixteenth notes, and rests. There are some handwritten annotations above the staff.

A musical staff in G major with a treble clef. It contains several measures of music, including eighth and sixteenth notes, and rests. There are some handwritten annotations above the staff.

A musical staff in G major with a treble clef. It contains several measures of music, including eighth and sixteenth notes, and rests. There are some handwritten annotations above the staff.



HITS OF TODAY Stage Band Series

STRANGERS IN THE NIGHT

(A Theme from the Universal Picture "A Man Could Get Killed")

191

Arranged by Bob Florence

Words by
CHARLES SINGLETON and EDDIE SNYDER

Music by
BERT KAEMPFERT

1st Ed AUTO SAX

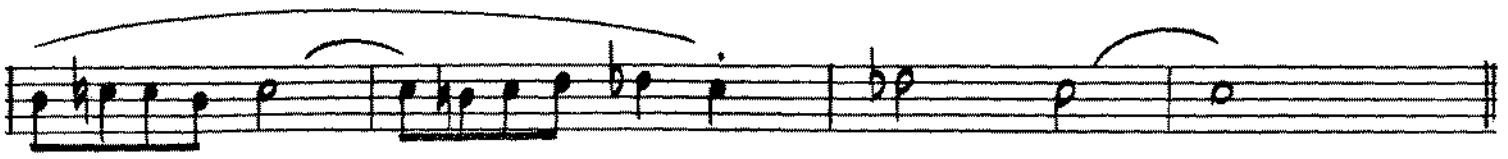
SLOW EASY SWING - M.M. ♩ = 72



1ST ED ALTO SAX - PAGE 2



2



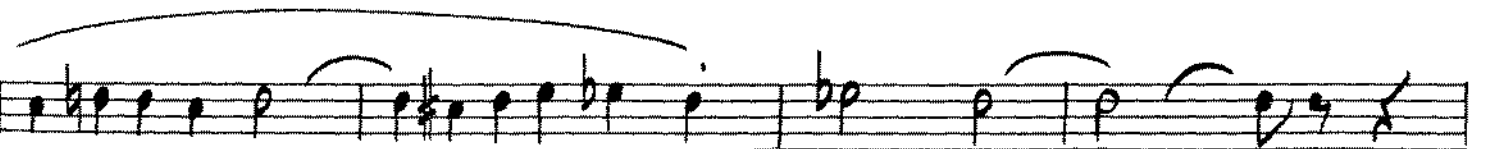
3



4



Solo



191

HITS OF TODAY Stage Band Series

STRANGERS IN THE NIGHT

(A Theme from the Universal Picture "A Man Could Get Killed")



Arranged by Bob Florence

Words by
CHARLES SINGLETON and EDDIE SNYDER

Music by
BERT KAEMPFERT

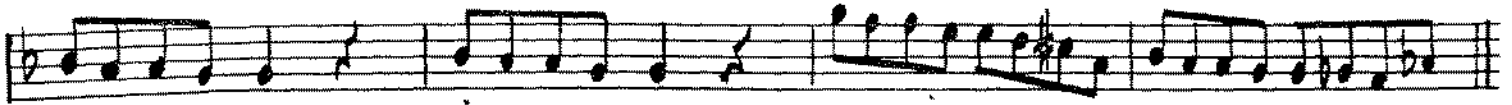
2ND E^b ALTO SAX
SLOW EASY SWING



A



2ND ED ALTO SAX PAGE 2



B



C



D



Solo





HITS OF TODAY Stage Band Series

STRANGERS IN THE NIGHT

(A Theme from the Universal Picture "A Man Could Get Killed")

191

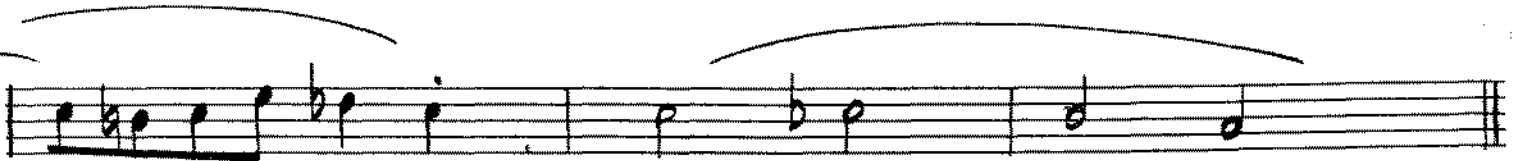
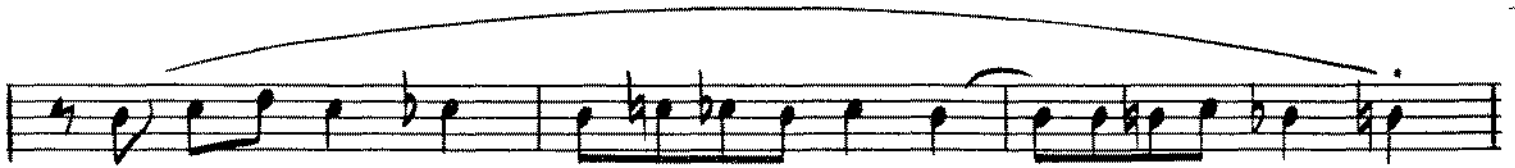
Arranged by Bob Florence

Words by
CHARLES SINGLETON and EDDIE SNYDER

Music by
BERT KAEMPFERT

1st Bb TENOR SAX

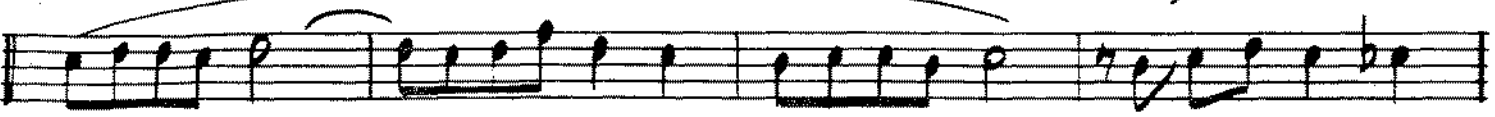
SLOW EASY SWING



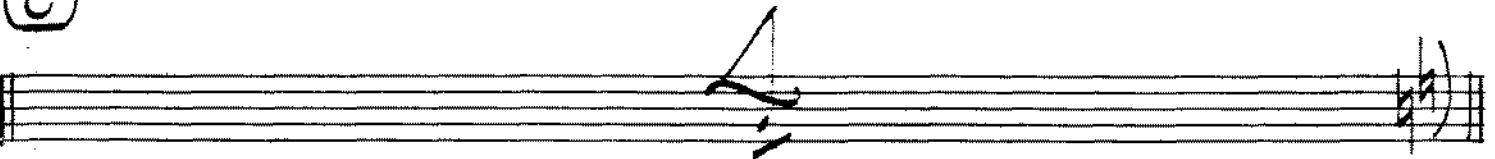
1st \flat TENOR SAX - PAGE 2



~~B~~



C



D



SOLI





HITS OF TODAY Stage Band Series

STRANGERS IN THE NIGHT

(A Theme from the Universal Picture "A Man Could Get Killed")

191

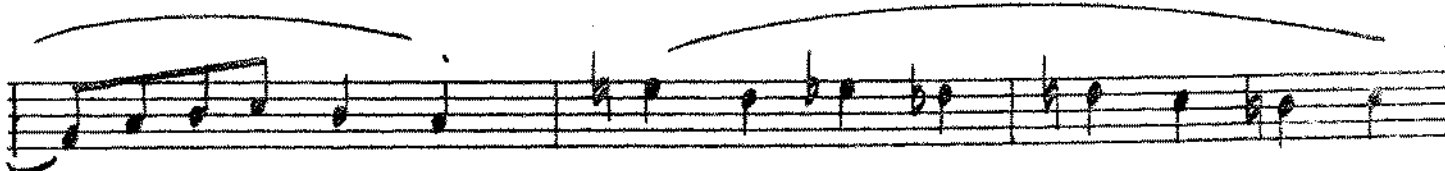
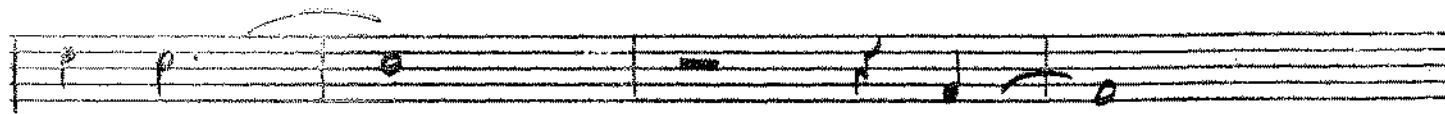
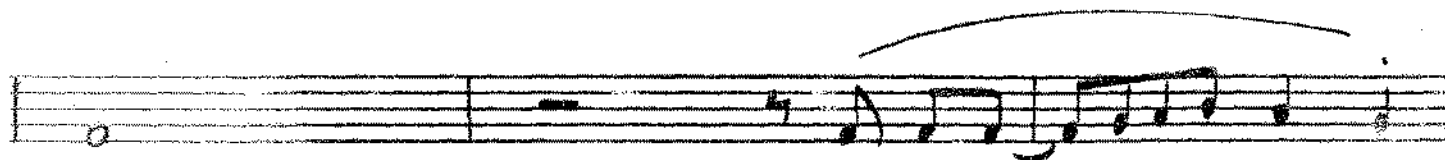
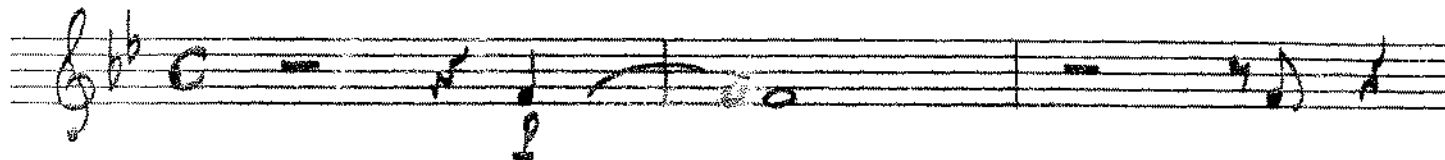
Arranged by Bob Florence

Words by CHARLES SINGLETON and EDDIE SHANLEY

Music by BERT KAEMPFFERT

2ND B^b TENOR SAX

SLOW EASY SWING



(A)



2ND B♭ Tenor Sax - PAGE 2

(B)

(C)

(D)

SOLI



HITS OF TODAY Stage Band Series

STRANGERS IN THE NIGHT

(A Theme from the Universal Picture "A Man Could Get Killed")

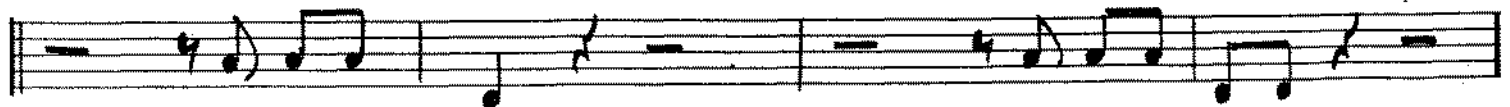
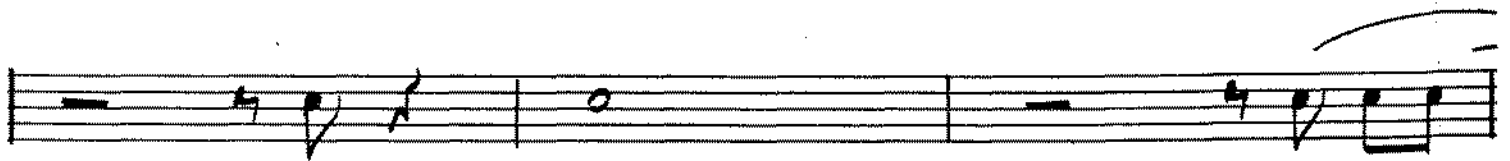
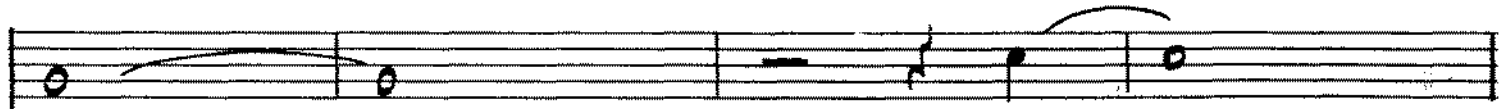
191

Words by CHARLES SINGLETON and EDDIE DE WYLER
Music by BERT KAEMPFFERT

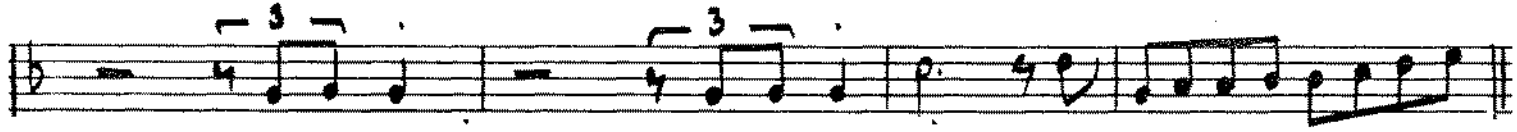
Arranged by Bob Florence

E♭ BARitone SAX

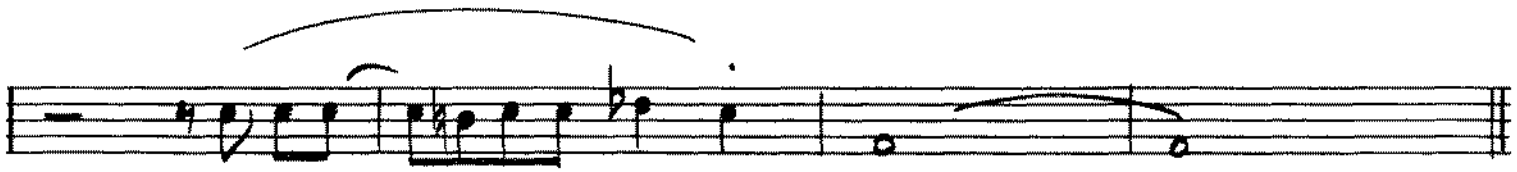
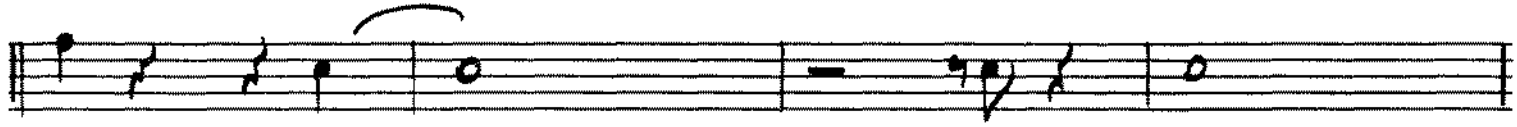
SLOW EASY SWING



BARITONE SAX - PAGE 2



(B)



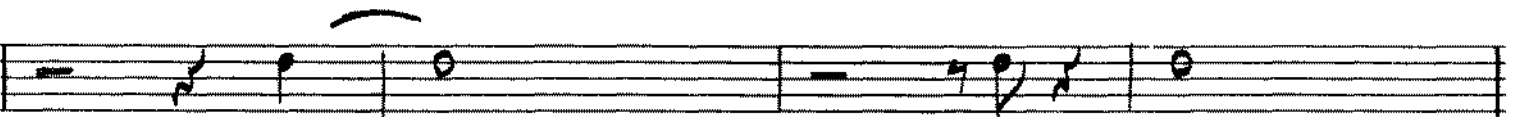
(C)



(D)



Solo



191



HITS OF TODAY Stage Band Series

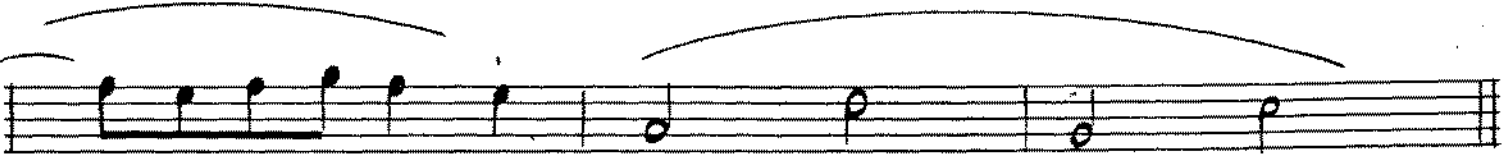
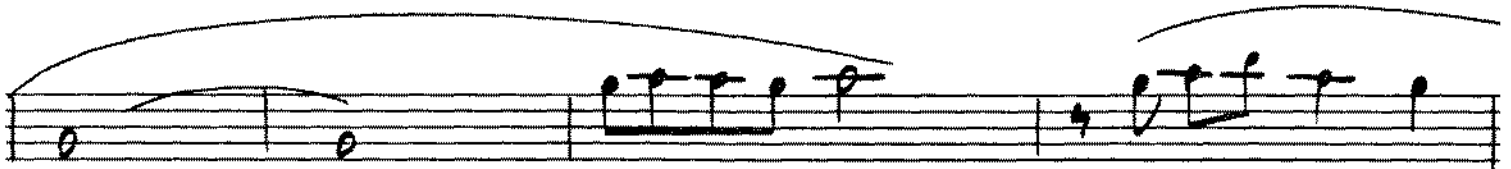
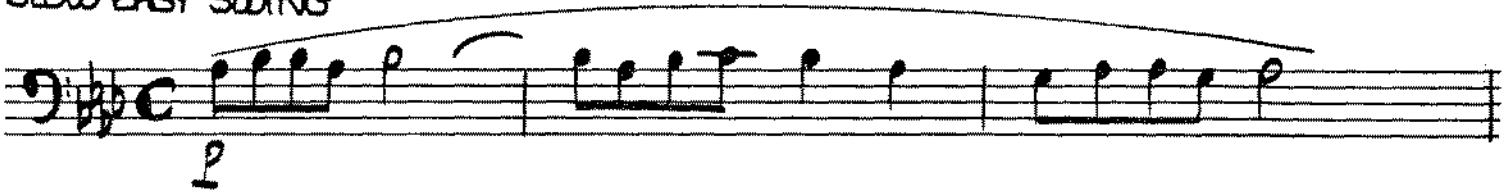
STRANGERS IN THE NIGHT

(A Theme from the Universal Picture "A Man Could Get Killed")

Arranged by Bob Florence

Words by
CHARLES SINGLETON and EDDIE SNYDER
Music by
BERT KAEMPFFERT

1ST TROMBONE
SLOW EASY SWING



A



1ST TROMBONE - PAGE 2

Musical staff with treble clef, key signature of two flats, and 4/4 time signature. It contains two triplet markings over eighth notes and a series of eighth notes.

(B)

Musical staff with treble clef, key signature of two flats, and 4/4 time signature. It features a long slur over a sequence of eighth notes.

Musical staff with treble clef, key signature of two flats, and 4/4 time signature. It features a long slur over a sequence of eighth notes.

(C)

Musical staff with treble clef, key signature of two flats, and 4/4 time signature. It contains a single eighth note followed by a double bar line and a fermata.

(D)

Musical staff with bass clef, key signature of two flats, and 4/4 time signature. It contains a sequence of eighth notes with various accidentals.

PLAY IF NO 2ND TENOR

Musical staff with bass clef, key signature of two flats, and 4/4 time signature. It features a sequence of eighth notes with various accidentals and a dynamic marking 'p'.

Musical staff with treble clef, key signature of two flats, and 4/4 time signature. It features a long slur over a sequence of eighth notes.

Musical staff with treble clef, key signature of two flats, and 4/4 time signature. It features a long slur over a sequence of eighth notes.



HITS OF TODAY Stage Band Series

STRANGERS IN THE NIGHT

(A Theme from the Universal Picture "A Man Could Get Killed")

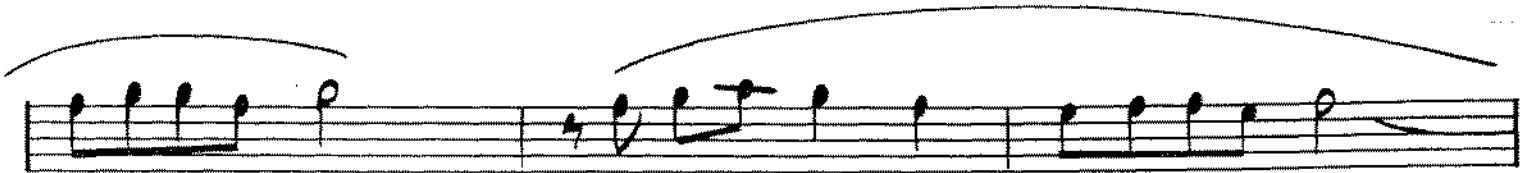
191

Arranged by Bob Florence

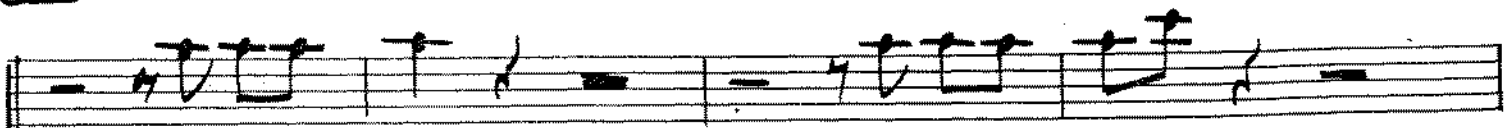
Words by
CHARLES SINGLETON and EDDIE SNYDER

Music by
BERT KAEMPFFERT

2ND TROMBONE
SLOW EASY SWING



A



2ND TROMBONE - PAGE 2

Musical staff with two triplets of eighth notes, a quarter rest, and a 4-measure rest.

B

Musical staff with a long slur over a series of eighth notes.

Musical staff with a slur over eighth notes and a half note.

C

Musical staff with a large triangle symbol.

Musical staff with a series of eighth notes and flats.

Musical staff with a '3' above a rest and a quarter note.

Musical staff with a slur over eighth notes.

Musical staff with a slur over eighth notes and a half note.



HITS OF TODAY Stage Band Series

STRANGERS IN THE NIGHT

(A Theme from the Universal Picture "A Man Could Get Killed")

191

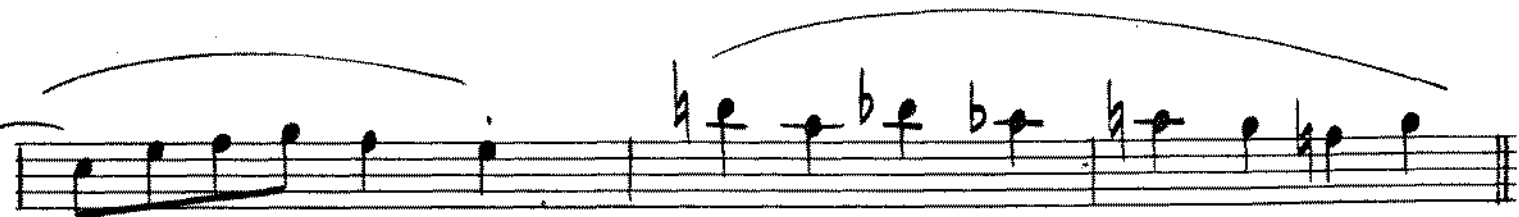
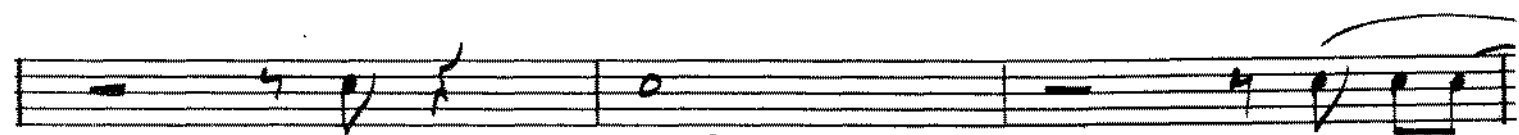
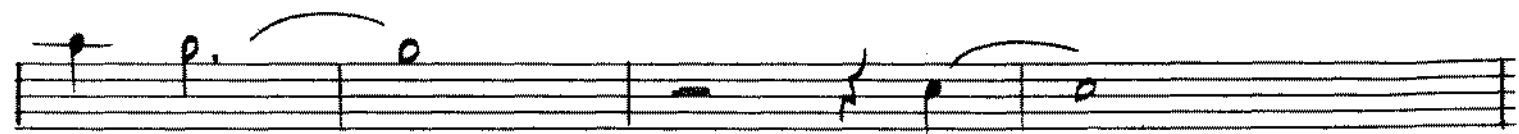
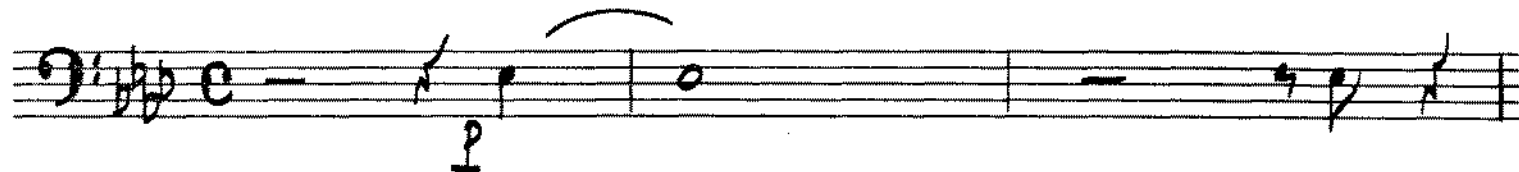
Arranged by Bob Florence

Words by CHARLES SINGLETON and EDDIE SNYDER

Music by BERT KAEMPFFERT

3RD TROMBONE

SLOW EASY SWING



A



3rd Trombone - PAGE 2

Musical staff with treble clef, key signature of two flats, and 4/4 time signature. It features a triplet of eighth notes followed by a dotted quarter note, a quarter rest, and a final eighth note with an accent mark.

(B)

Musical staff with treble clef, key signature of two flats, and 4/4 time signature. It starts with a quarter note, followed by eighth notes, a half note, a quarter rest, and a quarter note.

Musical staff with treble clef, key signature of two flats, and 4/4 time signature. It features a quarter rest, eighth notes with a slur, a half note, and another half note with a slur.

(C)

Musical staff with treble clef, key signature of two flats, and 4/4 time signature. It contains a half rest and a half note with a slur.

(D)

Musical staff with treble clef, key signature of two flats, and 4/4 time signature. It features a series of eighth and quarter notes with various accidentals and slurs.

Musical staff with treble clef, key signature of two flats, and 4/4 time signature. It contains a half rest and a half note with a slur.

Musical staff with treble clef, key signature of two flats, and 4/4 time signature. It starts with a quarter note, followed by eighth notes, a half note, a quarter rest, and a quarter note.

Musical staff with treble clef, key signature of two flats, and 4/4 time signature. It features a quarter rest, eighth notes with a slur, a half note, and another half note with a slur.



Arranged by Bob Florence

HITS OF TODAY Stage Band Series

STRANGERS IN THE NIGHT

(A Theme from the Universal Picture "A Man Could Get Killed")

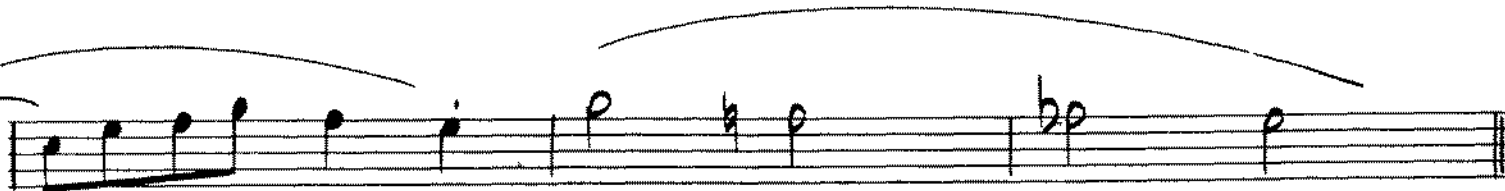
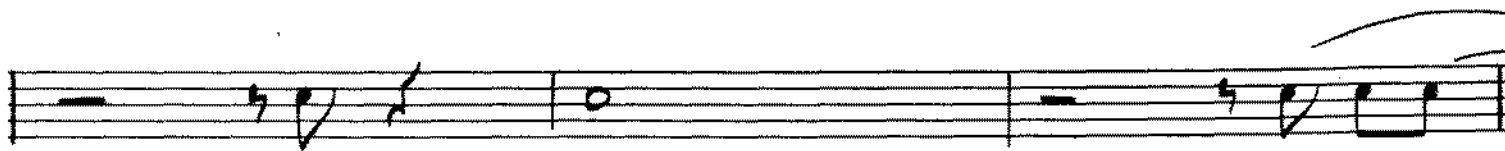
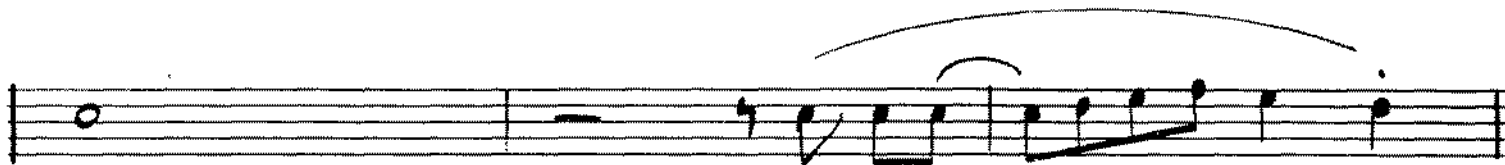
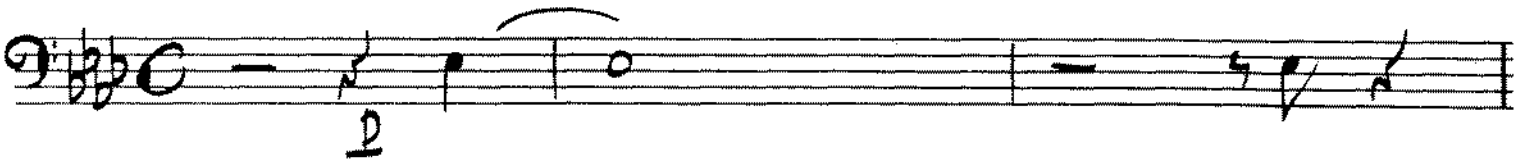
191

Words by CHARLES SINGLETON and EDDIE SNYDER

Music by BERT KAEMPFFERT

4TH TROMBONE

SLOW EASY SWING



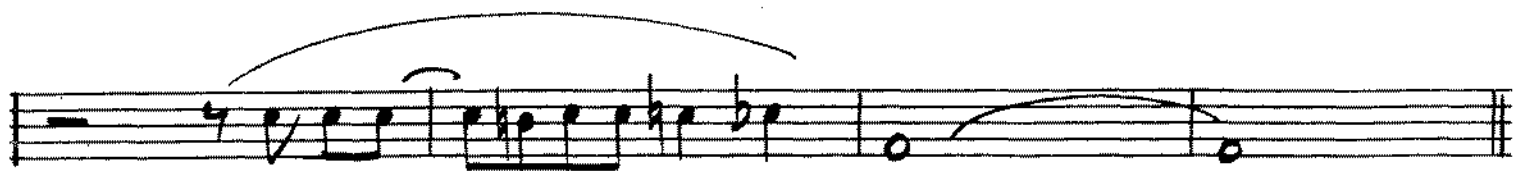
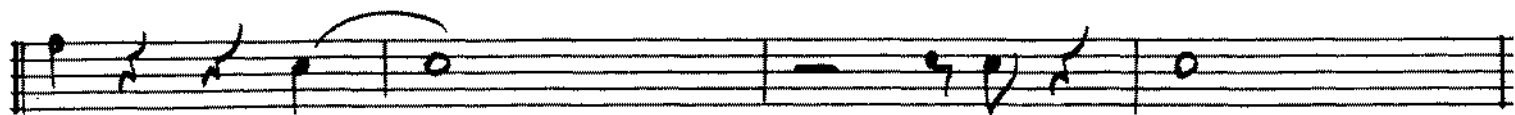
(A)



4TH TROMBONE - PAGE 2



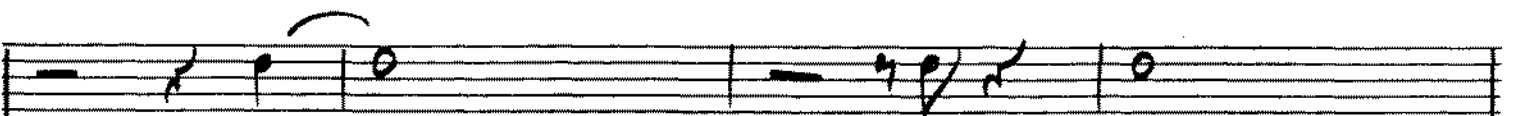
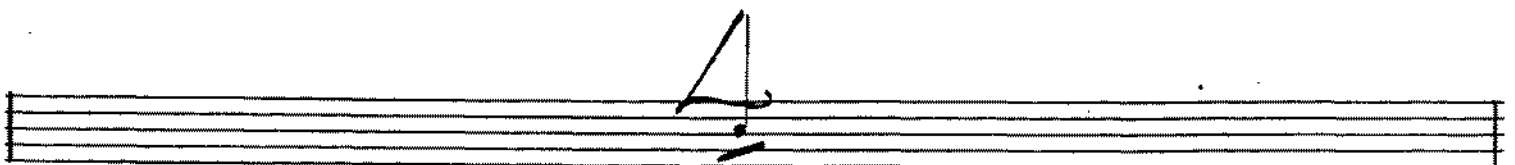
(B)



(C)



(D)





HITS OF TODAY Stage Band Series

STRANGERS IN THE NIGHT

(A Theme from the Universal Picture "A Man Could Get Killed")

191

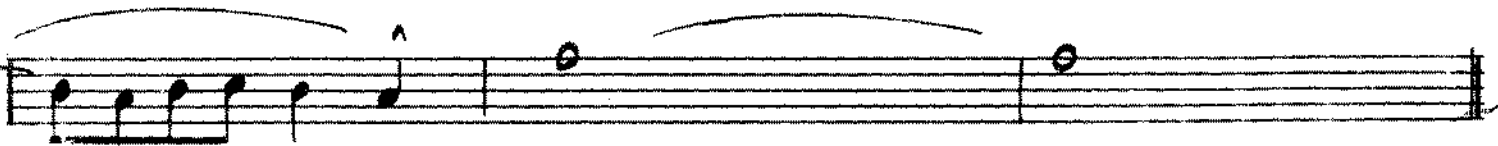
Arranged by Bob Florence

Words by CHARLES SINGLETON and EDDIE SNYDER

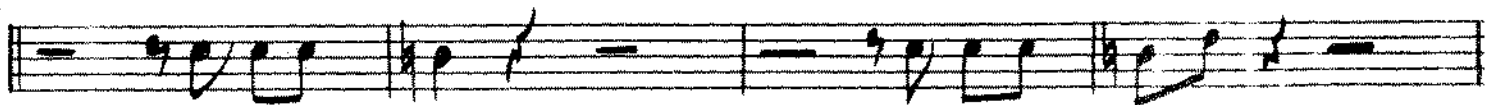
Music by BERT KAEMPFERT

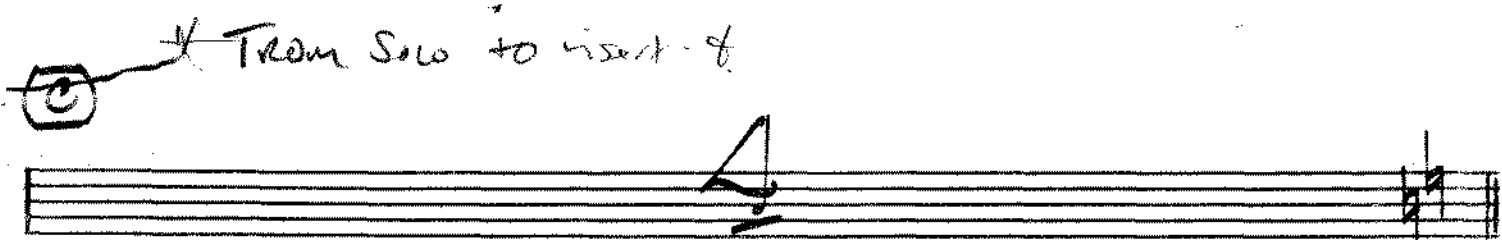
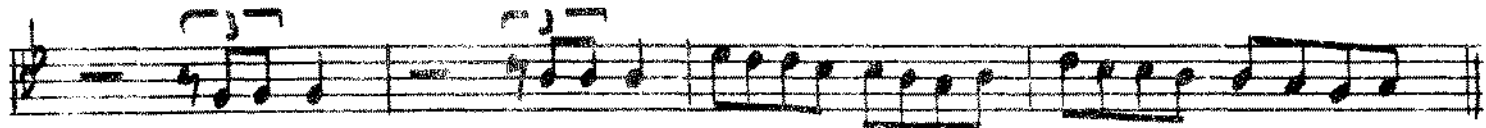
1st Bb TRUMPET

SLOW EASY SWING - M.M. ♩=72



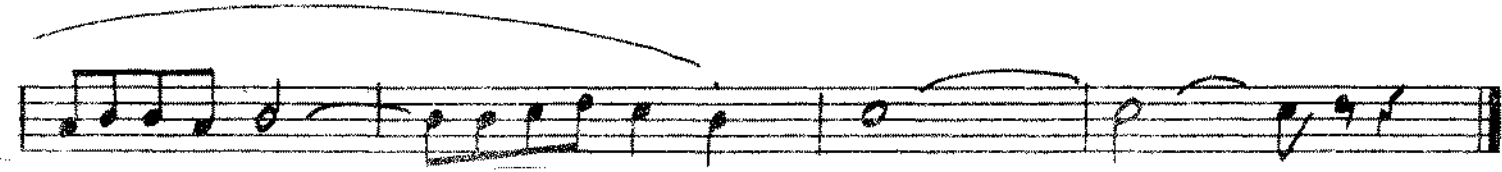
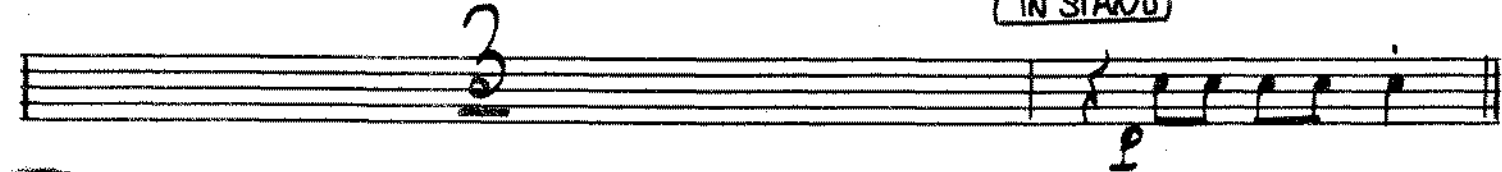
(A)





Piano?

(IN STAND)





HITS OF TODAY Stage Band Series

STRANGERS IN THE NIGHT

(A Theme from the Universal Picture "A Man Could Get Killed")

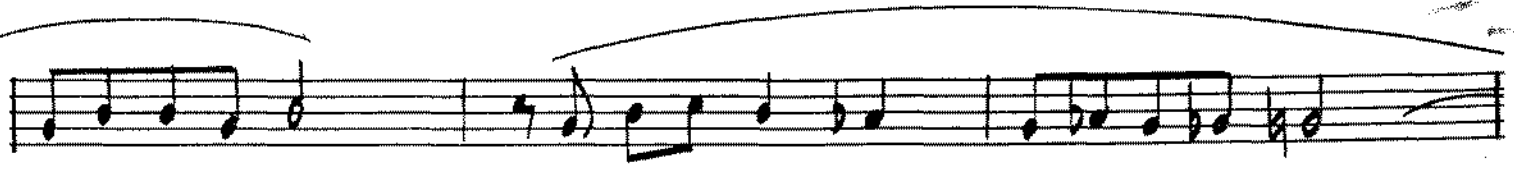
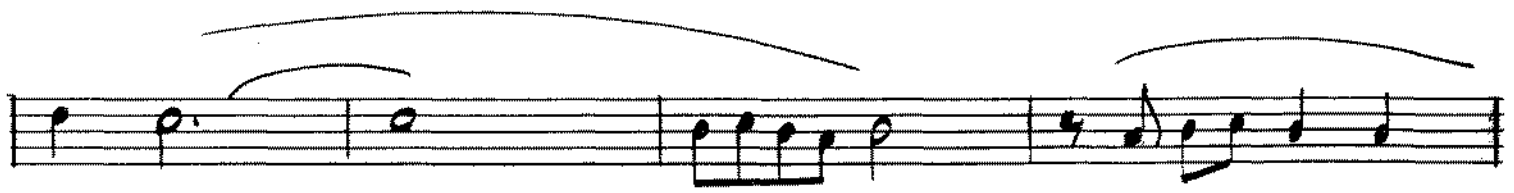
191

Arranged by Bob Florence

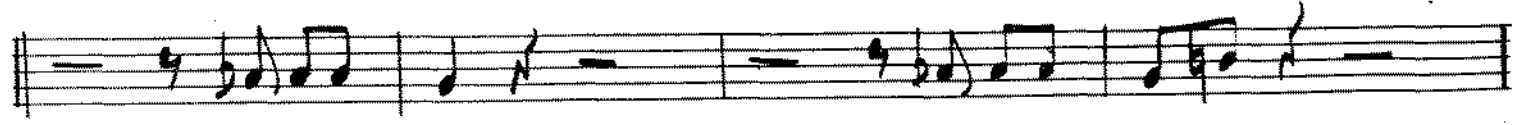
Words by CHARLES SINGLETON and EDDIE SNYDER

Music by BERT KAEMPFERT

2ND B^b TRUMPET
SLOW-EASY SWING



A



2ND B♭ TRUMPET - PAGE 2



(B)



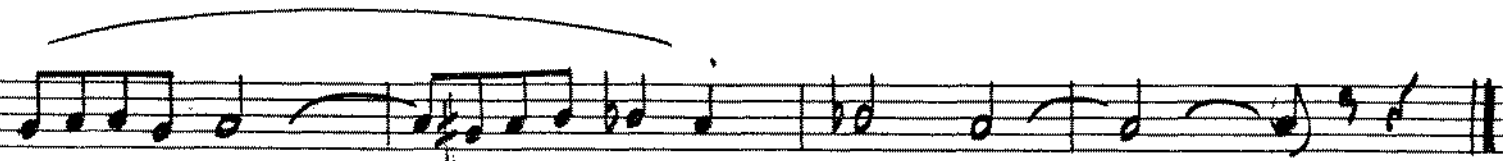
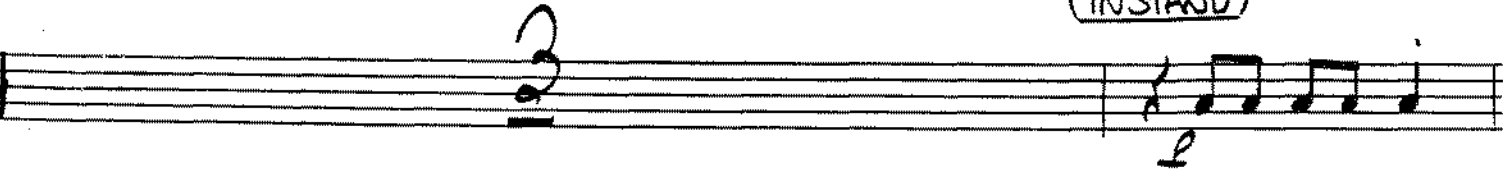
(C)



(D)



(INSTAND)





HITS OF TODAY Stage Band Series

STRANGERS IN THE NIGHT

(A Theme from the Universal Picture "A Man Could Get Killed")

191

Arranged by Bob Florence

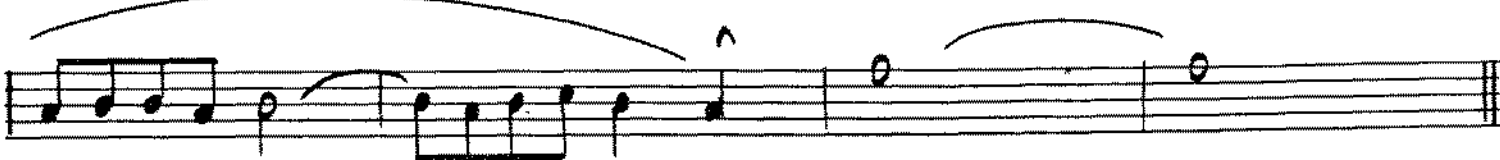
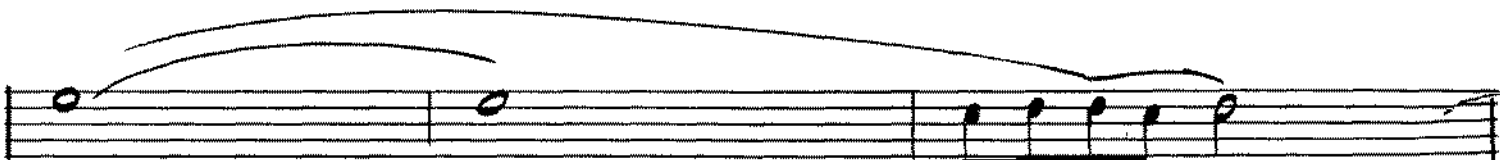
Words by CHARLES SINGLETON and EDDIE SNYDER

Music by BERT KAEMPFFERT

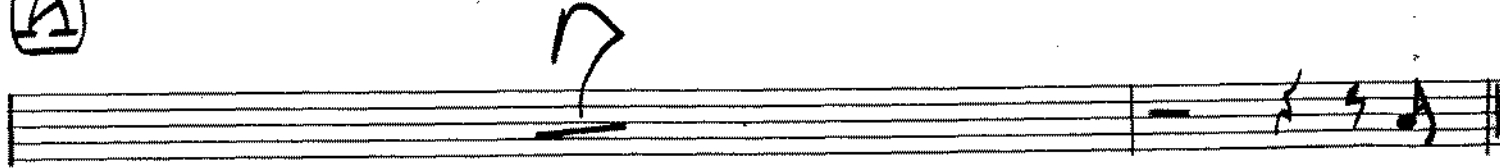
3rd ~~B~~ TRUMPET

SLOW EASY SWING

HARMON MUTE



A



B

3rd TRUMPET - PAGE 2

Handwritten musical notation for section B, consisting of two staves. The first staff contains a melodic line with eighth and quarter notes, and the second staff contains a similar line with some rests and a final whole note.

C

OPEN

Handwritten musical notation for section C, showing a single staff with a few notes and a final double bar line.

D

HARMON MUTE

3

Handwritten musical notation for section D, consisting of five staves. The first staff has a melodic line with flats. The second staff has a triplet of notes. The remaining three staves contain melodic lines with various note values and rests.



HITS OF TODAY Stage Band Series

STRANGERS IN THE NIGHT

(A Theme from the Universal Picture "A Man Could Get Killed")

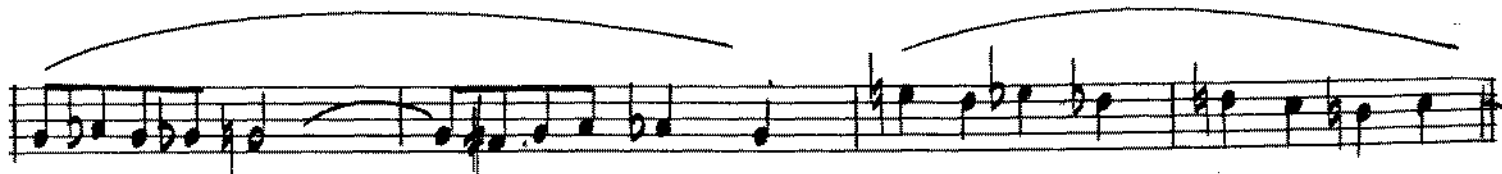
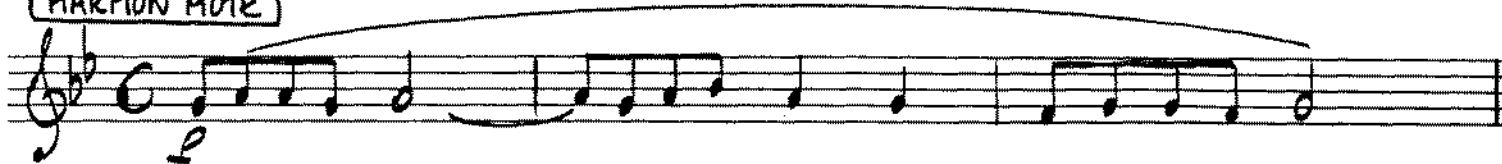
191

Arranged by Bob Florence

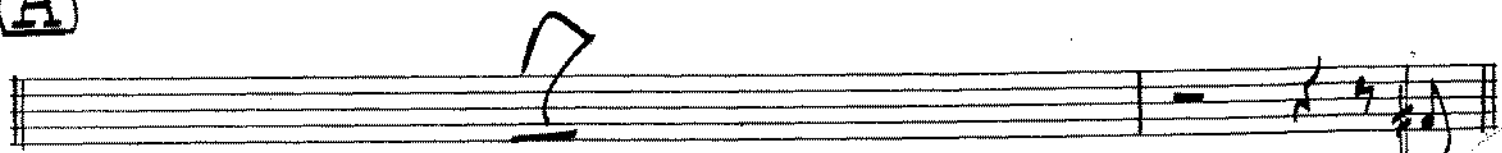
Words by CHARLES SINGLETON and EDDIE SNYDER

Music by BERT KAEMPFBERT

4TH BD TRUMPET
SLOW EASY SWING
(HARMON MUTE)



A

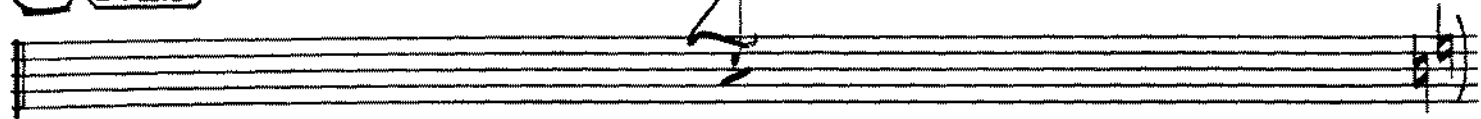


4TH B♭ TRUMPET. PAGE 2

B



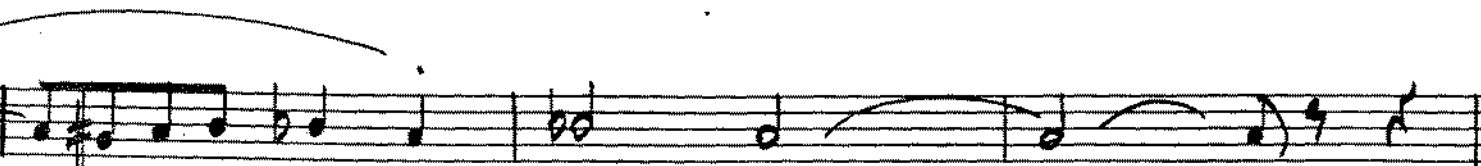
C (OPEN)



D



HARMON MIXE



STRANGERS IN THE NIGHT

(A Theme from the Universal Picture "A Man Could Get Killed")

191

Words by CHARLES SINGLETON and EDDIE SNYDER

Music by BERT KAEMPFFERT

Arranged by Bob Florence

PIANO
SLOW EASY SWING - M.M. ♩ = 72

Handwritten musical notation for the first system. The top staff is in treble clef with a common time signature (C). The bottom staff is in bass clef. The music consists of chords and a simple bass line. Chords are labeled as follows: $A\flat 6$, $A\flat MA7$, $A\flat MA7$, $A\flat 6$, $A\flat MA7$, $A\flat 6$.

Handwritten musical notation for the second system. The top staff is in treble clef with a common time signature (C). The bottom staff is in bass clef. Chords are labeled as follows: $A\flat 6$, $A9$, $A\flat 6$, $A9$, $A\flat 6$, $A9$, $A\flat MA7$, $G6$, $A\flat 6$, $A\flat MA7$, F^+5 .

Handwritten musical notation for the third system. The top staff is in treble clef with a common time signature (C). The bottom staff is in bass clef. Chords are labeled as follows: $B\flat m(9)$, $B\flat m$, $B\flat m+5$, $B\flat m6$, $B\flat m7$, $B\flat m7$, $B\flat m9$, $B\flat 7$, F^+5 .

PIANO - PAGE 2

Handwritten musical notation for the first system. The first staff contains chords: Bbm7, Bbm7, E9, Eb9, Eb7sus D7sus, Eb7sus. The second staff contains a bass line with notes and rests.

Handwritten musical notation for the second system. The first staff contains chords: E9, E9, Eb9, Cm9, Cm7, F7b9, F7b5, Bbm9, Bbm7, Eb7b9, Eb7b9. The second staff contains a bass line with notes and rests.

Handwritten musical notation for the third system. The first staff contains chords: Ab7, Ab7sus, Cm7b5, F7, Cm7b5, F7, Cm7b5, F7. The second staff contains a bass line with notes and rests.

Handwritten musical notation for the fourth system. The first staff contains chords: Bbm7, Bbm7b5, Fm7, Bbm7, Cm7, D7b9, E9, Bbm7, A9. The second staff contains a bass line with notes and rests.

B

Handwritten musical notation for section B. The top staff is a treble clef with chords and some melodic lines. The bottom staff is a bass clef with notes. Chords written below the treble staff include: Ab6, A7MA7, AbMA7, Ab6, A7MA7, Ab6, AbMA7, Ab6, AbMA7, Ab6, G6/Ab.

Handwritten musical notation for section C. The top staff is a treble clef with chords and some melodic lines. The bottom staff is a bass clef with notes. Chords written below the treble staff include: Bm7, Bb6, Bm7, Eb9, Dsus2, Eb9, Eb9, Eb9, Eb9, Eb9, Abm7, Ab6.

C Solo

Handwritten musical notation for section C, Solo. The top staff is a treble clef with a melodic line. The bottom staff is a bass clef with notes. Chords written below the treble staff include: Ab, E7, Eb7, Ab7, D7MA7, Cm7, Bm7, A7MA7, Gm7, F#7, F7.

D

Handwritten musical notation for section D. The top staff is a treble clef with chords and some melodic lines. The bottom staff is a bass clef with notes. Chords written below the treble staff include: Fm7, Em7, Ebm7, Dm7, G7b9, G7b9, Ab7b9, A7b9, Bb7b9, Ab7b9, A7b9, G7b9, Fm7b5, Em7b5, Ebm7b5, Dm7b5, G7b9.

Ab13 G7b5 Bb7 Cm7 Cm7 Ab9

Bb6/F Gm7 Cm7 F7sus Bb6 BbMA7

BbMA7 Bb6 BbMA7 Bb6 BbMA7 Bb6 A6/C#

Cm7 Cm6 Cm7 F9 E7sus F7sus F9 F#9 F9 Bm7 Bb6 Bb6



HITS OF TODAY Stage Band Series

STRANGERS IN THE NIGHT

(A Theme from the Universal Picture "A Man Could Get Killed")

191

Arranged by Bob Florence

Words by CHARLES SINGLETON and EDDIE SNYDER

Music by BERT KAEMPFERT

GUITAR

Slow EASY SWING

Ab6 Abma7 Abma7 Ab6 Abma7 Ab6

Ab6 A9 Ab6 A9 Ab6 A9 Abma7 Abma7 G6 Ab6 Abma7/6 F7(+5)

Bbm(9) Bbm Bbm(+5) Bbm6 Bbm7 Bbm7 Bbm9 Bbm9 F7sus

Bbm7 Bbm7 E9 Eb9 Eb7sus D7sus Eb7sus

Eb7sus Eb9 E9 Eb9 Cm9 Cm7 F7(b9) F7(b5) Bbm9 Bbm7 Eb7(b9) Eb7b9

A Ab7 Ab7sus Cm7(b5) F7 Cm7(b5) F7 Cm7(b5) F7

$B^b M^7$ $B^b M^7$ $b5$ $F M^7$ $B^b M^7$ $C M^7$ $D b6$ $E b9$ $B^b M^7$ A^9

(B) $A b6$ $A^b M A^7$ $A^b M A^7$ $A b6$ $A^b M A^7$ $A b6$ $A^b M A^7$ $A b6$ G^b / B^b

$B^b M^7$ $B^b M^6$ $B^b M^7$ $E b9$ $E b9$ D^7 SUS $E b^7$ SUS $E b9$ E^9 $E b9$ $A^b M^7$ $A b6$ $A b6$

(C)

(D) $F M^7$ $E M^7$ $E M^7$ $D M^7$ G^7 $b9$ G^7 $b9$ $A b7$ A^7 B^b7 A^7 A^b7 G^7 $F M^7$ $E M^7$ $E M^7$ $D M^7$ G^7 $b9$ A^b13 G^7 $b5$ B^b $C M^7$

$C M^7$ $A b9$ B^b6 / F $G M^7$ $C M^7$ F^7 SUS

B^b6 $B^b M A^7$ $B^b M A^7$ B^b6 $B^b M A^7$ B^b6 $B^b M A^7$ B^b6 A^b / C^b

$C M^7$ $C M^6$ $C M^7$ F^9 F^9 E^7 F^7 F^9 F^9 F^9 F^9 $B^b M^7$ B^b6 B^b6



HITS OF TODAY Stage Band Series

STRANGERS IN THE NIGHT

(A Theme from the Universal Picture "A Man Could Get Killed")

191

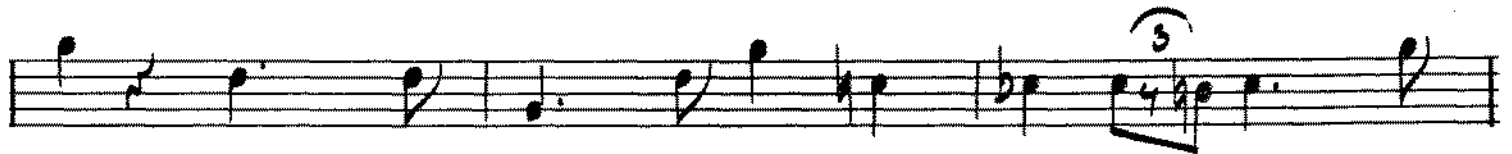
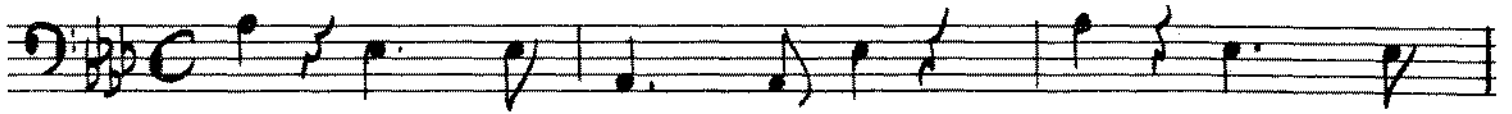
Arranged by Bob Florence

Words by
CHARLES SINGLETON and EDDIE SNYDER

Music by
BERT KAEMPFFERT

BASS

Slow Easy Swing



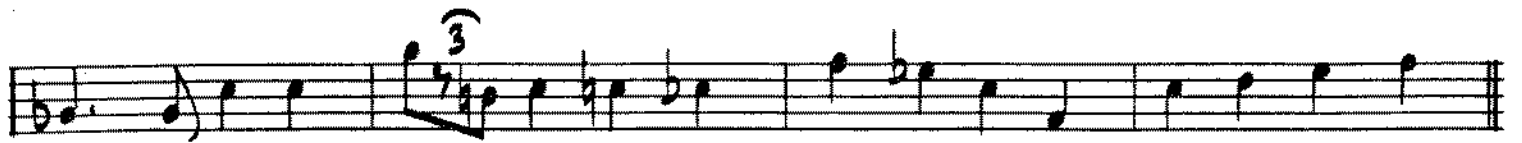
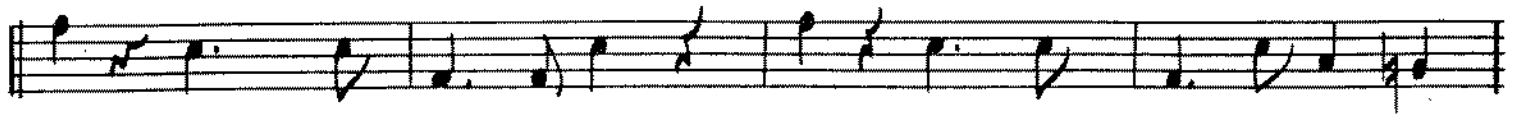
A



BASS - PAGE 2



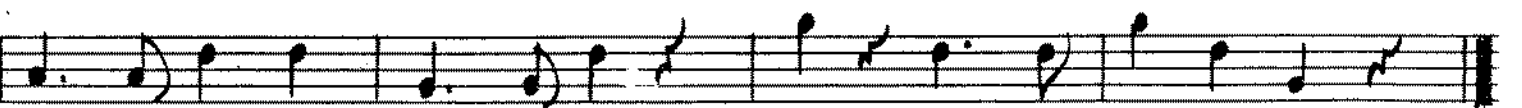
(B)

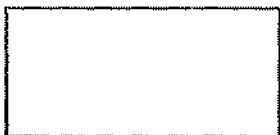


(C)



(D)





HITS OF TODAY Stage Band Series

STRANGERS IN THE NIGHT

(A Theme from the Universal Picture "A Man Could Get Killed")

191

Arranged by Bob Florence

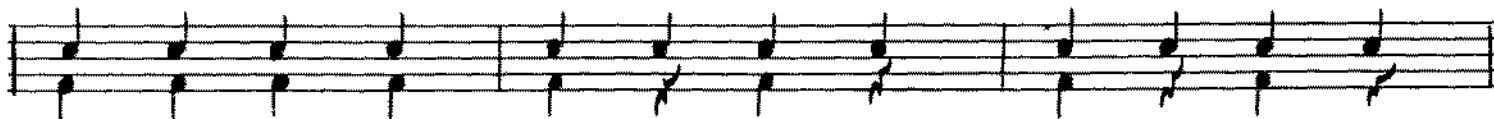
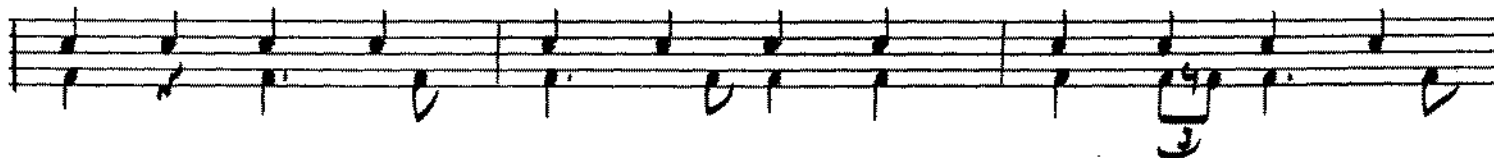
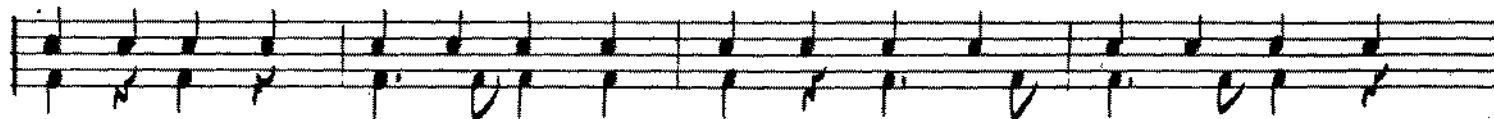
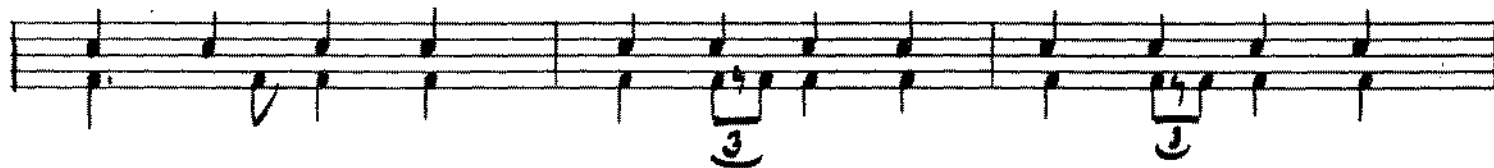
Words by CHARLES SINGLETON and EDDIE SNYDE

Music by BERT KAEMPFERT

DRUMS

Slow Easy Swing - M.M. ♩ = 72

(BRUSHES)



A



DRUMS- PAGE 2

A musical staff with two lines. The top line contains a sequence of eighth notes. The bottom line contains a sequence of eighth notes with three triplet markings (circles with the number 3) under the first, second, and eighth measures.

B

A musical staff with two lines. The top line contains a sequence of eighth notes. The bottom line contains a sequence of eighth notes.

A musical staff with two lines. The top line contains a sequence of eighth notes. The bottom line contains a sequence of eighth notes with a triplet marking (circle with the number 3) under the second measure.

PIANO SOLO
LYM (C)

TO STRK

A musical staff with two lines. The top line contains a sequence of eighth notes with asterisks above each note. The bottom line contains a sequence of eighth notes.

D

A musical staff with two lines. The top line contains a sequence of eighth notes. The bottom line contains a sequence of eighth notes with two accent markings (circles with a dot) above the eighth and ninth measures.

A musical staff with two lines. The top line contains a sequence of eighth notes. The bottom line contains a sequence of eighth notes.

A musical staff with two lines. The top line contains a sequence of eighth notes. The bottom line contains a sequence of eighth notes.

A musical staff with two lines. The top line contains a sequence of eighth notes. The bottom line contains a sequence of eighth notes with a triplet marking (circle with the number 3) under the second measure.